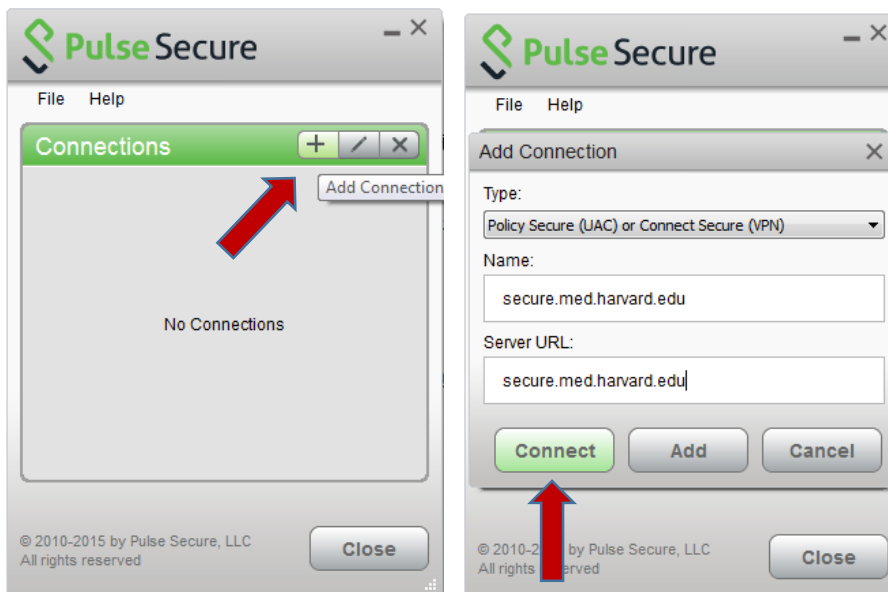


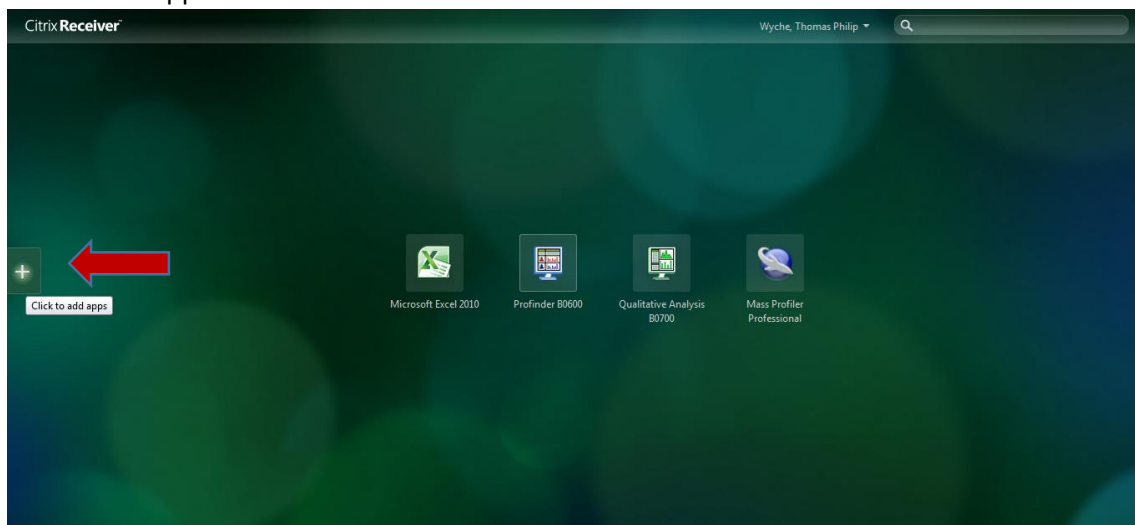
## Citrix

1. If you are using a computer on the HMS network, skip to #5. You will need to access Citrix by VPN if you are using a computer not on the HMS network.
2. If you don't have VPN access, fill this form out:  
[https://hms.az1.qualtrics.com/jfe/form/SV\\_dhUZWxTUoclZoJD](https://hms.az1.qualtrics.com/jfe/form/SV_dhUZWxTUoclZoJD)
3. Download the VPN software (Junos Pulse) for your operating system  
<https://hms.harvard.edu/departments/hms-information-technology/it-service-catalog/network-wireless/hms-virtual-private>
4. VPN using Pulse Secure:
  - a. Add connection
  - b. Type in secure.med.harvard.edu for server URL
  - c. Log-in using your ecommons ID and password

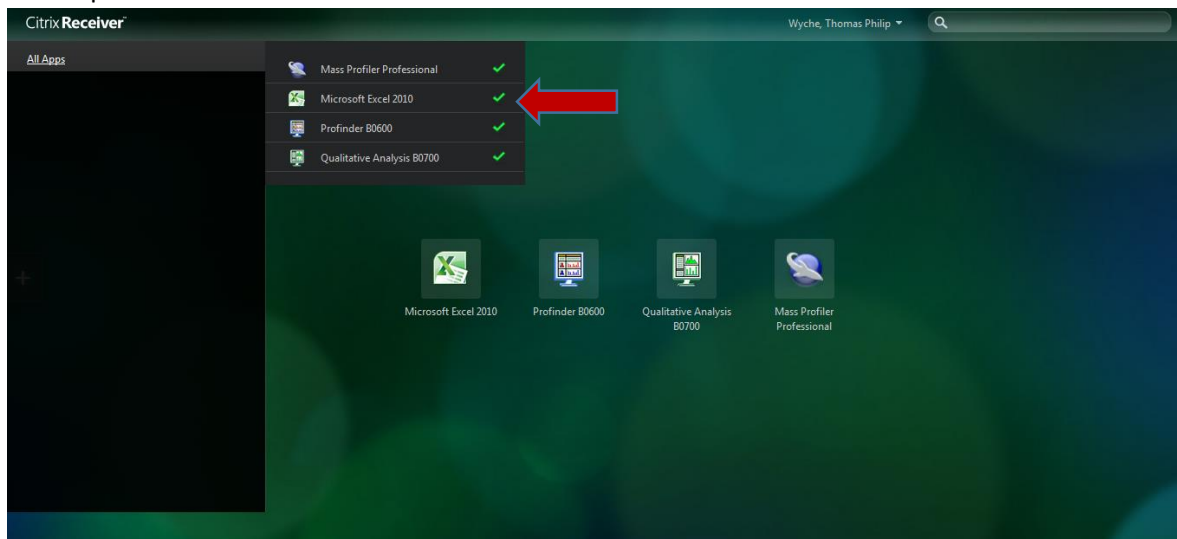


5. Download the Citrix Receiver <https://www.citrix.com/downloads/citrix-receiver.html>
6. Log-in to Citrix at <https://clardyxenappdc.med.harvard.edu/Citrix/ClardyWeb/>
  - a. Username: med\ecommonsID
  - b. Password: ecommons password

7. Click to add apps on the left side of the screen



8. Click "All Apps" and click on the app to make sure it is checked green so it is added to your Citrix Desktop



9. Data storage:
- Research.files.med.harvard.edu
    - Follow the directions at <https://hms.harvard.edu/departments/hms-information-technology/it-service-catalog/storage-servers>
    - Transfer your data files from the QTOF computer into your research.files.med.harvard.edu folder
  - Additional storage - BCMP server (Molecule)
    - Request an account on molecule: <http://wqcg.med.harvard.edu/support>
    - Logging into molecule: <https://wqwiki.hms.harvard.edu/display/wqcgdocumentation/molecule+-+BCMP+Fileserver>
    - In the HomeDirectories folder, you can find your personal folder.